

## DIGESTIVE SYSTEM

### XC-306 Stomach Model

This model shows the morphology of the stomach in a moderate distended state. With the longitudinal section, the model shows the structures of the gastric folds, pyloric valve, pyloric sphincter muscles, gastric mucosa and the transitional mucosa of the gastricesophagus. Made of hard plastic and magnified 2 times the natural size.

XC-306



### XC-311 Liver, Pancreas & Duodenum Model

An economical way to study the basic structure of the liver, spleen, blood vessels and pancreas. External structure is illustrated as well as the pancreatic duct of the pancreas. This model also shows the abdominal aorta and inferior vena cava. Life size. Dissectible into 3 parts.

Made of PVC.

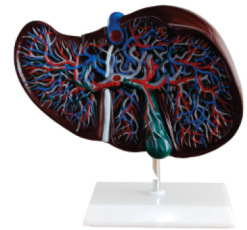
XC-311



### XC-312 Liver Model

An economical way to study the basic structure of the liver. The complex vessels network in the opened liver, displayed in different colors on this model : hilus vessels, extra-hepatic and intra-hepatic bile ducts. Liver mounted on stand.

XC-312

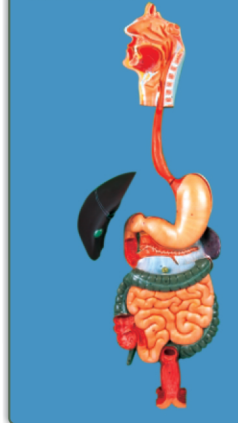


### GD/A12001 Digestive System

This model shows alimentary canal from mouth to rectum in median section and includes buccal cavity, pharynx, esophagus with half of the stomach, the opened duodenum, small and large intestine, the opened appendix, the unfolded rectum, the transverse colon, liver and pancreas and it displays around 49 positions.

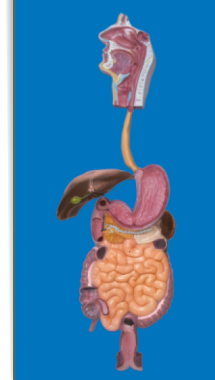
It is made of advanced PVC materials.

GD/A12001



### ZX1301-A Human Digestive System

ZX1301-A



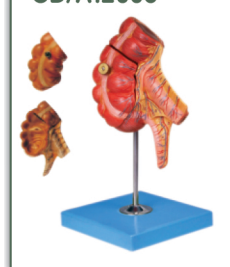
### GD/A12006 Appendix and Caecum

The model shows wall of the caecum and appendix. Separated into 2 parts and 17 positions are displayed.

Natural size and mounted on a stand.

Material: Advanced PVC and painted with imported paint.

GD/A12006



### ZX 1402 Human Stomach Pancreas & Duodenum

ZX 1402

